

# DELGER

— REAL ESTATE —

BOZEMAN MONTANA



Craig Delger  
BROKER / OWNER  
406.581.7504

**THIS BROCHURE PROVIDED BY CRAIG DELGER - MONTANA REAL ESTATE EXPERT**

*Powered by Data, Technology, and Local Expertise*



## 18 Cactus Ridge Road, Twin Bridges MT 59754

\$1,350,000

Acres: ± 77.22

MLS#: 412594

**DELGER**  
— REAL ESTATE —  
MONTANA RANCHES

RANCHES | FARMS | RECREATIONAL PROPERTY

RanchRealEstateGroup.com

REALTOR® LISTING SERVICE  
**MLS**   
Information deemed reliable,  
but not guaranteed

# INTRODUCTION

Perched above the Beaverhead Valley approximately 9 miles south of Twin Bridges, Seven Ranges Ranch is a remarkable 77.22± acre Montana property offering panoramic views of seven mountain ranges, exceptional privacy, and a rare combination of aviation, equestrian, and recreational amenities. A conservation easement bordering the western boundary helps preserve the area's open-space character and protect the surrounding views. The ranch is anchored by a custom home offering just under 2,000 square feet of living space plus a loft area. Expansive windows capture the surrounding scenery, while exposed wood beams, slate flooring, and a floor-to-ceiling wood-burning fireplace create a comfortable Montana atmosphere. The primary suite includes a tiled walk-in shower, jetted soaking tub, and double vanity. Additional features include central heat, fiber optic internet, reverse osmosis, water softener, updated appliances, and an oversized heated and insulated two-car garage. Outdoor living is enhanced by approximately 750 square feet of covered decks and porches, including a premium new deck completed in 2025. Aviation enthusiasts will appreciate the private runway and insulated, heated airplane hangar equipped with a Higher Power hangar door system. Additional improvements include a heated and insulated shop with electric radiant heat and a well-appointed apartment above, providing flexible guest or caretaker accommodations. Both the residence and apartment are served by permitted septic systems. Equestrian facilities include fenced pastures and a barn. The property also features dedicated rifle and pistol shooting ranges, including a purpose-built rifle shooting structure. Deer and antelope are frequent visitors. The Beaverhead, Big Hole, Ruby, and Jefferson Rivers are nearby, providing outstanding trout fishing opportunities. Extensive public lands throughout the Beaverhead-Deer Lodge National Forest and surrounding mountain ranges offer exceptional hunting, hiking, horseback riding, camping, and ATV recreation. Yellowstone National Park is approximately 90 minutes away. With mountain views, private aviation infrastructure, quality improvements, horse facilities, shooting ranges, abundant wildlife, and no covenants, Seven Ranges Ranch presents a rare Montana ownership opportunity. MLS# 412594



## FEATURES

<b>Status:</b>	Active
<b>Type:</b>	Residential
<b>Sub Type:</b>	SingleFamilyResidence
<b>Acres:</b>	± 77.22
<b>Listing Date:</b>	2026-06-25
<b>Listing Agent:</b>	Andrew Heppe of Whitetail Properties RE LLC

<b>Year Built:</b>	2003
<b>Beds:</b>	2
<b>Baths:</b>	2
<b>Heating/Cooling:</b>	ForcedAir CentralAir

## LOCATION



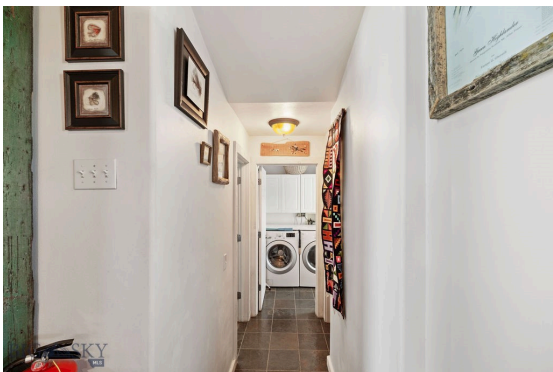
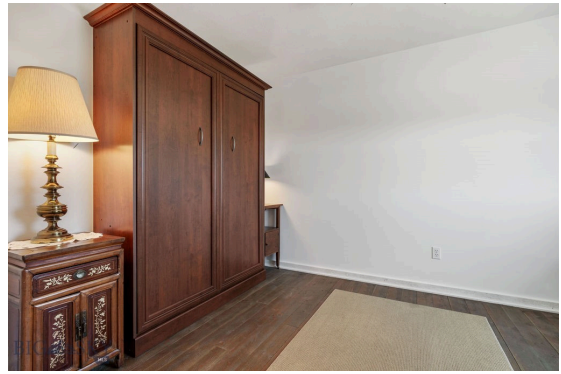
Address: 18 Cactus Ridge Road, Twin Bridges MT 59754

# PHOTOS













# INVESTING IN MONTANA RANCH LAND



Interest in Montana ranch land as an investment has been strong over the last several years. Throughout Montana, but particularly in Southwest Montana we have seen increased demand for ranches as a safe investment. Making the decision to pursue investing in ranch land can be incredibly rewarding (both personally and financially) but there are a lot of factors that go into investing and owning ranch land. "Ranch" is a general term that can describe a wide range of property from large income producing cattle ranches, smaller recreational properties, fly fishing properties, hunting ranches, or horse properties with just a few acres. All of these definitions of ranch property are in demand in Montana, and are appreciating in value over the long term. However, income producing ranch land is the most stable, and is in the highest demand by investors.

Before buying property in Montana it is important to understand Montana Water Rights. All water in Montana is owned by the State. A Montana Water Right allows you to legally use water in a prescribed manner, but not to own the water itself. Montana's water law is based in the Doctrine of Prior Appropriation - First in Time, First in Right. Water rights are ranked according to the date on which the water was first put to beneficial use. Priority dates dictate the volume and distribution of water from wells, rivers, and streams. Landowners must put the water to beneficial use without waste to retain their right to use Montana's water. Without diversion and beneficial use, there is no water right.





A conservation easement is a legal agreement between a landowner and a land trust that limits the uses of the land in order to protect its conservation values. The landowner retains title to the property. The creation of the conservation easement can qualify as a one-time donation that has tax benefits. The conservation easement runs with the title, meaning that if the property is purchased by a new owner, the conservation easement remains. Land ownership carries with it a bundle of rights—the right to occupy, lease, sell, develop, construct buildings, farm, restrict access or

harvest timber, among others. A landowner can give up one or more of those rights for a purpose such as conservation while retaining ownership of the remainder of the rights. In ceding a right, the landowner “eases” it to another entity, such as a land trust. For example, a landowner may give up the right to build additional structures while retaining the right to grow crops.

Landowners looking to sell their property can use conservation easements to protect what future owners are able to do with the property. This typically reduces the marketable value of the property. If the conservation is setup properly, the landowners are able to take advantage of tax benefits associated with the creation and “donation” of the conservation easement. The potential tax benefits of a donated conservation easement are two-fold. First, income tax benefits may exist at the federal level. There may be benefits at the state level as well. However, state property taxes can not be reduced by a donation of a conservation easement in Montana. Second, the conservation easement works as an estate planning tool to reduce estate tax liability. To qualify for a tax deduction, the donation of a conservation easement must be considered a charitable gift by the IRS (Internal Revenue Service). It is strongly recommended that a qualified tax professional review the conservation easement donation to ensure it meets IRS requirements. A tax deductible, charitable donation can only be made to an IRS qualified tax-exempt organization. The donation of a conservation easement must be complete and irrevocable in perpetuity. In order to claim a tax deduction on the donation of a conservation easement the landowner must obtain a qualified appraisal by a state certified appraiser.

All MLS Information ©Southwest Montana Multiple Listing Service, Inc. All rights reserved. MLS information is provided exclusively for consumers' personal, non-commercial use and may not be used for any purpose other than to identify prospective properties consumers may be interested in purchasing. Information is deemed reliable but is not guaranteed accurate by the MLS or Delger Real Estate.

v1.01-2026-06-26

# MONTANA REAL ESTATE EXPERT

Delger Real Estate sold over \$155 Million in Real Estate in 2016-2023. Recognized experts in Internet Marketing and Technology, Delger Real Estate are able to generate maximum exposure for their real estate listings. The result: according to ListHub, Delger Real Estate listings outperform 98% of the market. We encourage you to contact Craig to learn more about ranch and recreational real estate in Montana.

*POWERED BY INTELLIGENT MARKETING, PROPRIETARY TECHNOLOGY, AND LOCAL EXPERTISE*



**Craig Delger**  
BROKER / OWNER  
406.581.7504  
craigdelger@gmail.com

v1.01-2026-06-26