

DELGER

— REAL ESTATE —

BOZEMAN MONTANA



Craig Delger
BROKER / OWNER
406.581.7504

THIS BROCHURE PROVIDED BY CRAIG DELGER - MONTANA REAL ESTATE EXPERT

Powered by Data, Technology, and Local Expertise



, Bozeman MT 59715

\$595,000

Acres: ± 19.747

MLS#: 410070

INTRODUCTION

Presenting an exceptional and exceedingly rare offering: a remarkable 39-acre parcel along coveted Woodchuck Road, adjoining Timberline Creek Subdivision. The 19.747 acre parcel creates an intimate forest sanctuary, enveloped in a mature stand of towering timber. The landscape is abundant with native wildlife—most notably deer, elk and the occasional moose that share the property—offering a daily connection to nature. This parcel provides exceptional privacy and a serene, almost cinematic sense of place. A tailor-made homesite can be found in the elevated meadow, unveiling sweeping high mountain vistas that capture Bozeman Pass, the Bridger Mountains, and Tobacco Root Mountain Range beyond. Bathed in natural light, the premier homesite offers an extraordinary canvas for a custom residence, where sunrises and sunsets become part of everyday living. With power already in place, this offering combines pristine mountain living with essential modern power. Whether envisioned as a private retreat, a generational estate, or a bespoke mountain compound, this offering represents a once-in-a-lifetime opportunity to craft an enduring legacy in one of Montana's most sought-after landscapes. Bozeman and Livingston—are just a scenic 20-minute drive—this legacy property embodies the ideal balance of seclusion, accessibility, and unspoiled Montana grandeur. MLS# 410070



FEATURES

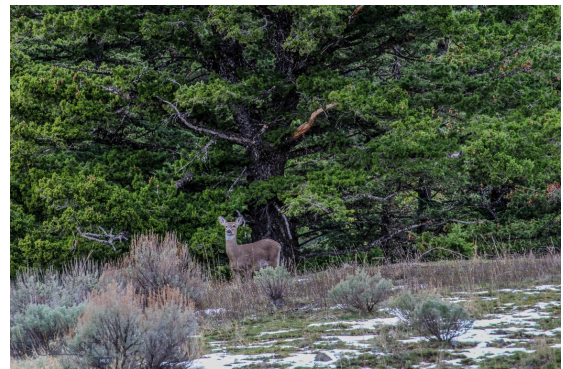
Status:	Active
Type:	Land
Sub Type:	UnimprovedLand
Acres:	± 19.747
Listing Date:	2026-04-06
Listing Agent:	Cody Carestia of Ursus Montana Realty LLC

LOCATION

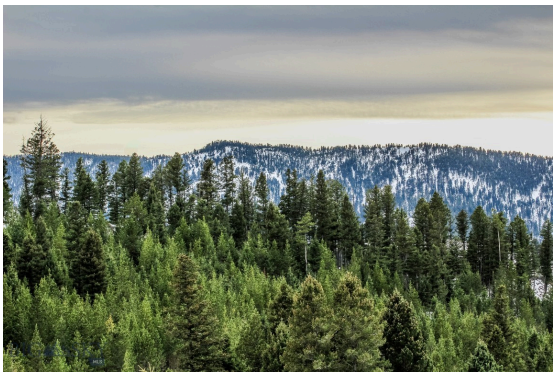


Address: , Bozeman MT 59715

PHOTOS











GALLATIN COUNTY

Located in a sweeping valley in the heart of the Rocky Mountains, Gallatin County is the most populated and fastest growing county in scenic southwest Montana. Gallatin Valley has a rich history. Native americans referred to this area as the “Valley of Flowers”. The name seems appropriate because of the great variety of wild flowers found on the mountainsides as well as in the valley. Gallatin Valley derives its name from the Gallatin River, one of the forks of the Missouri river that rises in Yellowstone Park. The Gallatin river, Jefferson river, and Madison river all merge at the town of Three Forks to form the Missouri River. Lewis and Clark named the rivers on their famous expedition to this part of the world in 1805.



There are approximately 1,682,048 acres(2,500 square miles) in Gallatin County including over 16,500 acres in surface water. Approximately 800,000 acres in Gallatin County are owned by the public and managed by several local and national agencies including the Bureau of Land Management, U.S. Forest Service, National Park Service, Montana Fish Wildlife & Parks, Montana Department of Transportation, Department of Natural Resources & Conservation and various local governments. The U.S. Forest Service is the largest land holder in Gallatin County, currently managing over 665,000 acres. In addition to the Forest Service, various state departments manage approximately 61,000 acres. The Bureau of Land Management holds just over 9,000 acres and an additional 1,600 acres belongs to local governments. On the southern edge of Gallatin County is Yellowstone National Park. Yellowstone National Park is one of the world’s primary wildlife preserves and has the greatest concentration of geysers and hot springs in America. Yellowstone National Park is 2,219,789 acres in size(Larger than Rhode Island and Delaware combined). Over 97,600 acres of Yellowstone National Park is located within Gallatin County.

INVESTING IN MONTANA RANCH LAND



Interest in Montana ranch land as an investment has been strong over the last several years. Throughout Montana, but particularly in Southwest Montana we have seen increased demand for ranches as a safe investment. Making the decision to pursue investing in ranch land can be incredibly rewarding (both personally and financially) but there are a lot of factors that go into investing and owning ranch land. "Ranch" is a general term that can describe a wide range of property from large income producing cattle ranches, smaller recreational properties, fly fishing properties, hunting ranches, or horse properties with just a few acres. All of these definitions of ranch property are in demand in Montana, and are appreciating in value over the long term. However, income producing ranch land is the most stable, and is in the highest demand by investors.

Before buying property in Montana it is important to understand Montana Water Rights. All water in Montana is owned by the State. A Montana Water Right allows you to legally use water in a prescribed manner, but not to own the water itself. Montana's water law is based in the Doctrine of Prior Appropriation - First in Time, First in Right. Water rights are ranked according to the date on which the water was first put to beneficial use. Priority dates dictate the volume and distribution of water from wells, rivers, and streams. Landowners must put the water to beneficial use without waste to retain their right to use Montana's water. Without diversion and beneficial use, there is no water right.





A conservation easement is a legal agreement between a landowner and a land trust that limits the uses of the land in order to protect its conservation values. The landowner retains title to the property. The creation of the conservation easement can qualify as a one-time donation that has tax benefits. The conservation easement runs with the title, meaning that if the property is purchased by a new owner, the conservation easement remains. Land ownership carries with it a bundle of rights—the right to occupy, lease, sell, develop, construct buildings, farm, restrict access or

harvest timber, among others. A landowner can give up one or more of those rights for a purpose such as conservation while retaining ownership of the remainder of the rights. In ceding a right, the landowner “eases” it to another entity, such as a land trust. For example, a landowner may give up the right to build additional structures while retaining the right to grow crops.

Landowners looking to sell their property can use conservation easements to protect what future owners are able to do with the property. This typically reduces the marketable value of the property. If the conservation is setup properly, the landowners are able to take advantage of tax benefits associated with the creation and “donation” of the conservation easement. The potential tax benefits of a donated conservation easement are two-fold. First, income tax benefits may exist at the federal level. There may be benefits at the state level as well. However, state property taxes can not be reduced by a donation of a conservation easement in Montana. Second, the conservation easement works as an estate planning tool to reduce estate tax liability. To qualify for a tax deduction, the donation of a conservation easement must be considered a charitable gift by the IRS (Internal Revenue Service). It is strongly recommended that a qualified tax professional review the conservation easement donation to ensure it meets IRS requirements. A tax deductible, charitable donation can only be made to an IRS qualified tax-exempt organization. The donation of a conservation easement must be complete and irrevocable in perpetuity. In order to claim a tax deduction on the donation of a conservation easement the landowner must obtain a qualified appraisal by a state certified appraiser.

All MLS Information ©Southwest Montana Multiple Listing Service, Inc. All rights reserved. MLS information is provided exclusively for consumers' personal, non-commercial use and may not be used for any purpose other than to identify prospective properties consumers may be interested in purchasing. Information is deemed reliable but is not guaranteed accurate by the MLS or Delger Real Estate.

v1.01-2026-04-07

MONTANA REAL ESTATE EXPERT

Delger Real Estate sold over \$155 Million in Real Estate in 2016-2023. Recognized experts in Internet Marketing and Technology, Delger Real Estate are able to generate maximum exposure for their real estate listings. The result: according to ListHub, Delger Real Estate listings outperform 98% of the market. We encourage you to contact Craig to learn more about ranch and recreational real estate in Montana.

POWERED BY INTELLIGENT MARKETING, PROPRIETARY TECHNOLOGY, AND LOCAL EXPERTISE



Craig Delger
BROKER / OWNER
406.581.7504
craigdelger@gmail.com

v1.01-2026-04-07