

# DELGER

— REAL ESTATE —

BOZEMAN MONTANA



Craig Delger  
BROKER / OWNER  
406.581.7504

**THIS BROCHURE PROVIDED BY CRAIG DELGER - MONTANA REAL ESTATE EXPERT**

*Powered by Data, Technology, and Local Expertise*



## 6 Browtine Ln, Ennis MT 59729

\$999,500

Acres: ± 5.67

MLS#: 408476

# INTRODUCTION

Welcome to your Montana dream home! Nestled on 5.67 acres in the desirable Pronghorn Meadows community, this stunning 2,258 sq ft log cabin offers the perfect blend of rustic charm and modern comfort. Ideally located near Bozeman, West Yellowstone, and the world-renowned fly fishing and recreation of Ennis, this property is a true outdoor enthusiast's paradise. Inside, you'll find a bright, open living area anchored by a cozy gas stove — perfect for warming up after a day of adventure. The kitchen is a showstopper with granite countertops, a stunning custom live-edge Madison River countertop on the island, and custom pull-out cabinetry offering excellent storage. Adjacent to the kitchen, a dedicated dining area provides a warm and inviting space for gatherings and meals. A spacious laundry room with a stylish vessel sink and half bath adds to the home's thoughtful design. Upstairs, the loft leads to the luxurious primary suite, featuring a private balcony with breathtaking views of the Madison Mountain Range. The ensuite bathroom offers a double vanity, a private toilet room, a custom-tiled walk-in shower, and an additional balcony. A large walk-in closet and extra storage closets complete this beautiful retreat. The lower level includes a comfortable family room, two guest bedrooms, and a shared full bathroom are ideal for hosting family and friends. Outdoor living is a highlight with covered patios that include an outdoor bar which is ideal for entertaining under Montana's big sky, plus a charming front deck to take in peaceful morning sunrises and evening sunsets. A breezeway connects the main home to the 2-car garage, above which sits a charming 672 sq ft guest apartment with its own private entrance. The apartment includes a kitchenette, full bathroom with washer/dryer hook-ups, living area, and bedroom space and comes fully furnished. Featured on the Ennis Home Tour in 2019, this property is a rare find, offering privacy, stunning views, and luxurious finishes throughout. Don't miss this opportunity to own a piece of Montana paradise! MLS# 408476



## FEATURES

<b>Status:</b>	Active	<b>Style:</b>	Cabin
<b>Type:</b>	Residential	<b>Year Built:</b>	2005
<b>Sub Type:</b>	SingleFamilyResidence	<b>Beds:</b>	3
<b>Acres:</b>	± 5.67	<b>Baths:</b>	3
<b>View:</b>	Mountains, Valley	<b>Appliances:</b>	Dryer, Dishwasher, Microwave, Range, Refrigerator, Washer
<b>Water Features:</b>	None	<b>Heating/Cooling:</b>	ForcedAir Propane CentralAir
<b>Listing Date:</b>	2026-02-05		
<b>Listing Agent:</b>	Jenny Rohrback of PureWest Real Estate Ennis		

## LOCATION



Address: 6 Browline Ln, Ennis MT 59729

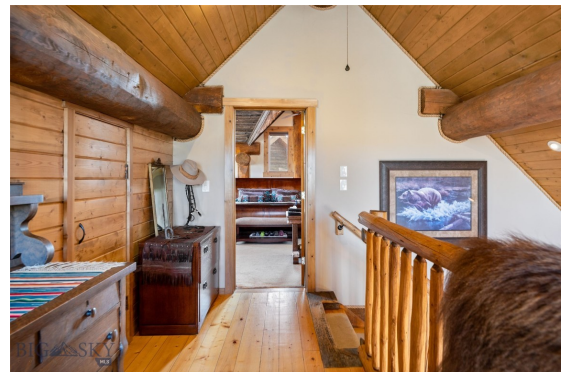
# PHOTOS













# INVESTING IN MONTANA RANCH LAND



Interest in Montana ranch land as an investment has been strong over the last several years. Throughout Montana, but particularly in Southwest Montana we have seen increased demand for ranches as a safe investment. Making the decision to pursue investing in ranch land can be incredibly rewarding (both personally and financially) but there are a lot of factors that go into investing and owning ranch land. "Ranch" is a general term that can describe a wide range of property from large income producing cattle ranches, smaller recreational properties, fly fishing properties, hunting ranches, or horse properties with just a few acres. All of these definitions of ranch property are in demand in Montana, and are appreciating in value over the long term. However, income producing ranch land is the most stable, and is in the highest demand by investors.

Before buying property in Montana it is important to understand Montana Water Rights. All water in Montana is owned by the State. A Montana Water Right allows you to legally use water in a prescribed manner, but not to own the water itself. Montana's water law is based in the Doctrine of Prior Appropriation - First in Time, First in Right. Water rights are ranked according to the date on which the water was first put to beneficial use. Priority dates dictate the volume and distribution of water from wells, rivers, and streams. Landowners must put the water to beneficial use without waste to retain their right to use Montana's water. Without diversion and beneficial use, there is no water right.





A conservation easement is a legal agreement between a landowner and a land trust that limits the uses of the land in order to protect its conservation values. The landowner retains title to the property. The creation of the conservation easement can qualify as a one-time donation that has tax benefits. The conservation easement runs with the title, meaning that if the property is purchased by a new owner, the conservation easement remains. Land ownership carries with it a bundle of rights—the right to occupy, lease, sell, develop, construct buildings, farm, restrict access or

harvest timber, among others. A landowner can give up one or more of those rights for a purpose such as conservation while retaining ownership of the remainder of the rights. In ceding a right, the landowner “eases” it to another entity, such as a land trust. For example, a landowner may give up the right to build additional structures while retaining the right to grow crops.

Landowners looking to sell their property can use conservation easements to protect what future owners are able to do with the property. This typically reduces the marketable value of the property. If the conservation is setup properly, the landowners are able to take advantage of tax benefits associated with the creation and “donation” of the conservation easement. The potential tax benefits of a donated conservation easement are two-fold. First, income tax benefits may exist at the federal level. There may be benefits at the state level as well. However, state property taxes can not be reduced by a donation of a conservation easement in Montana. Second, the conservation easement works as an estate planning tool to reduce estate tax liability. To qualify for a tax deduction, the donation of a conservation easement must be considered a charitable gift by the IRS (Internal Revenue Service). It is strongly recommended that a qualified tax professional review the conservation easement donation to ensure it meets IRS requirements. A tax deductible, charitable donation can only be made to an IRS qualified tax-exempt organization. The donation of a conservation easement must be complete and irrevocable in perpetuity. In order to claim a tax deduction on the donation of a conservation easement the landowner must obtain a qualified appraisal by a state certified appraiser.

All MLS Information ©Southwest Montana Multiple Listing Service, Inc. All rights reserved. MLS information is provided exclusively for consumers' personal, non-commercial use and may not be used for any purpose other than to identify prospective properties consumers may be interested in purchasing. Information is deemed reliable but is not guaranteed accurate by the MLS or Delger Real Estate.

v1.01-2026-06-01

# MONTANA REAL ESTATE EXPERT

Delger Real Estate sold over \$155 Million in Real Estate in 2016-2023. Recognized experts in Internet Marketing and Technology, Delger Real Estate are able to generate maximum exposure for their real estate listings. The result: according to ListHub, Delger Real Estate listings outperform 98% of the market. We encourage you to contact Craig to learn more about ranch and recreational real estate in Montana.

*POWERED BY INTELLIGENT MARKETING, PROPRIETARY TECHNOLOGY, AND LOCAL EXPERTISE*



**Craig Delger**  
BROKER / OWNER  
406.581.7504  
craigdelger@gmail.com

v1.01-2026-06-01